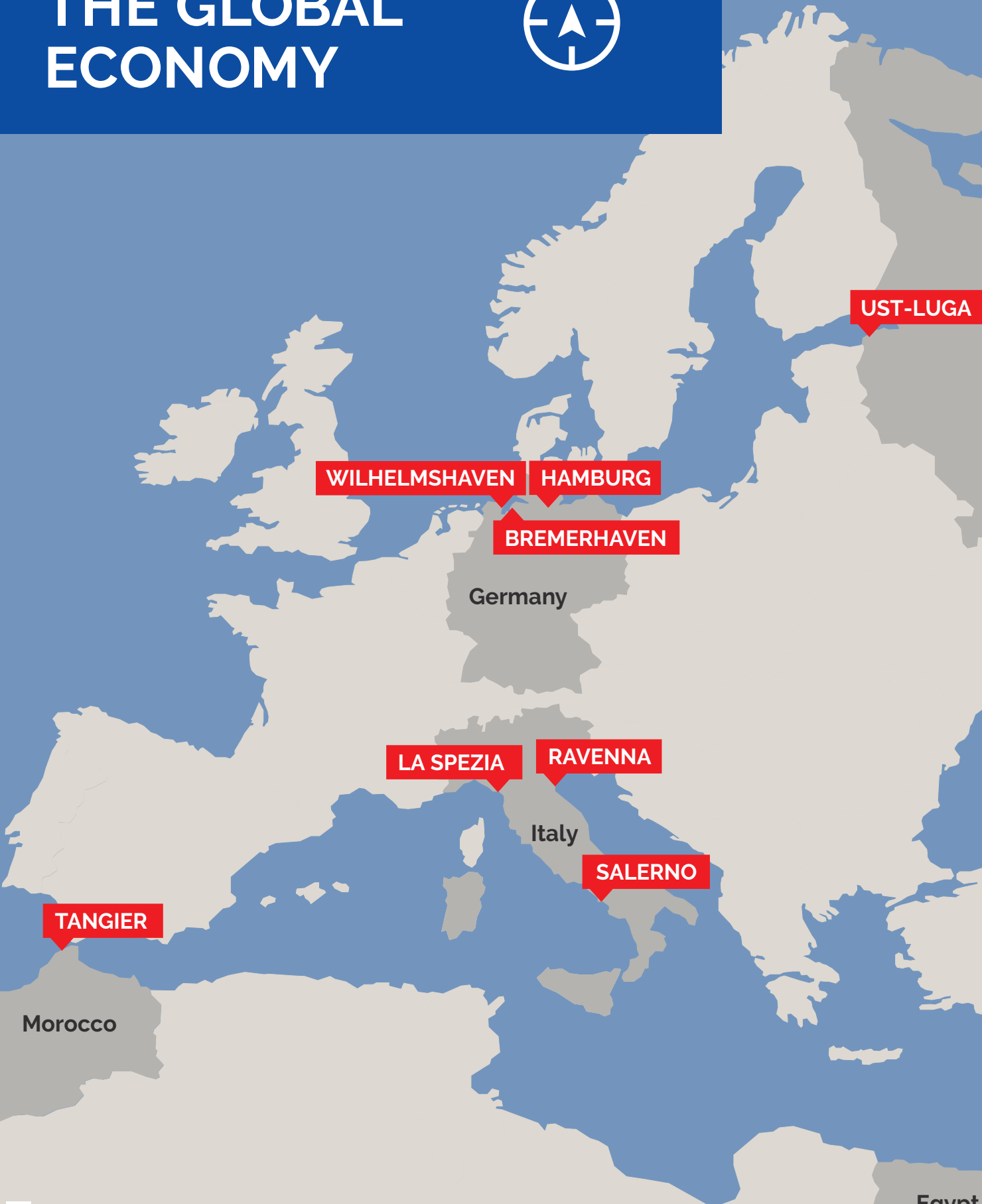




MOVING THE GLOBAL ECONOMY



MOVING THE GLOBAL ECONOMY





EUROGATE has established itself as the leading shipping line independent container terminal operator in Europe. Globalisation and ever tougher competition among ports necessitate foresighted decisions, continuous commitment and one hundred percent customer orientation. We actively address these challenges.

Containers are an expression of dynamic world trade. As a European company, we strive to continually optimise quality and service for our customers across national borders, enhance our pan-European position and strengthen our market leadership. At the same time we are committed to our local responsibility.

High productivity levels and optimally coordinated workflows characterise our container handling operations. Our staff play a decisive role here, with many of them already working with us in the second generation. We are committed to ensuring that our terminals comply with the latest technical standards and therefore remain competitive for the future by channelling substantial capital investments into their development.



The quality of service and high-performance of our terminals is a promise to our customers.“

Chairmen of the Management Board:
Thomas Eckelmann (r.), Michael Blach (l.)

OVERVIEW OF OUR GERMAN SEAPORTS

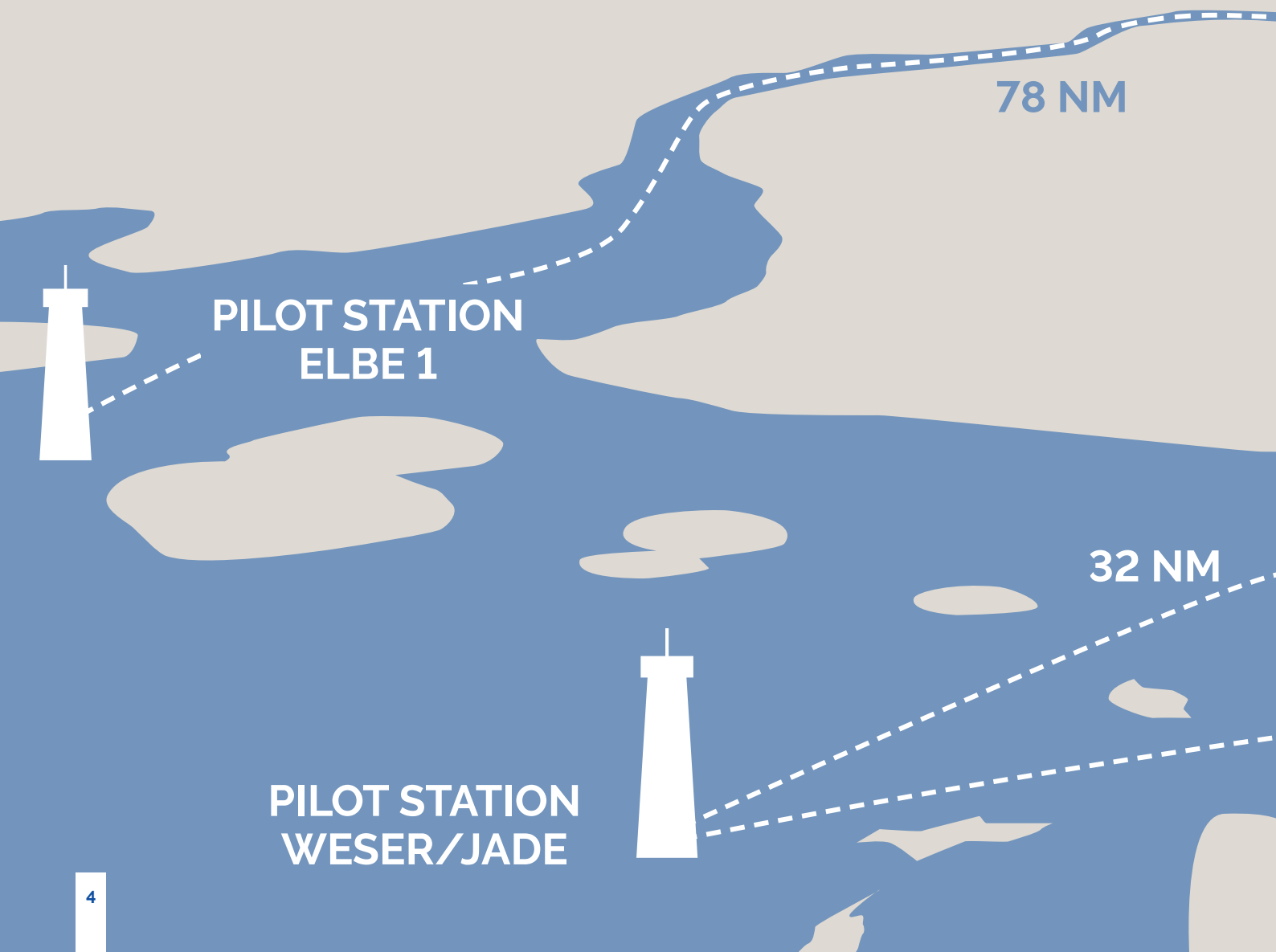
Our German container terminals are gateways to the European economy. Located within a maximum of only 90 km of air distance from each other, they form a strong unit, servicing each shipping line's individual needs.

PAGES

6 BREMERHAVEN

8 HAMBURG

10 WILHELMSHAVEN





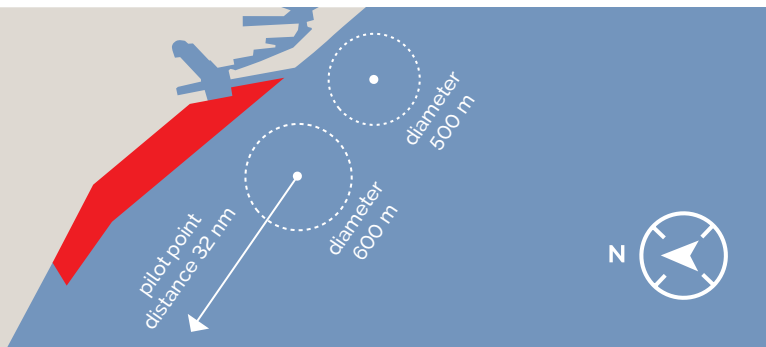
HAMBURG

BREMERHAVEN

24 NM

WILHELMSHAVEN

BREMERHAVEN



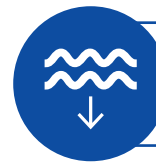
 **TERMINAL**  **TURNING BASIN**



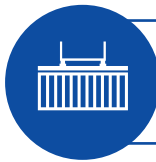
Length of quay:
4,680 m



53° 35' N
08° 31' E



Water depth:
14 – 16.5 m



Handling capacity:
7 mio TEUs



Terminal area:
2.9 mio m²



Container gantries:
41



EUROGATE Container Terminal Bremerhaven GmbH

Senator-Borttscheller-Straße 1
27568 Bremerhaven, Germany
Phone: +49 471 1425-02
E-mail: ctb@eurogate.eu
www.eurogate.eu

NTB – North Sea Terminal Bremerhaven GmbH & Co.

Senator-Borttscheller-Straße 14
27568 Bremerhaven, Germany
Phone: +49 471 94464-00
E-mail: sekretariat@ntb.eu
www.ntb.eu

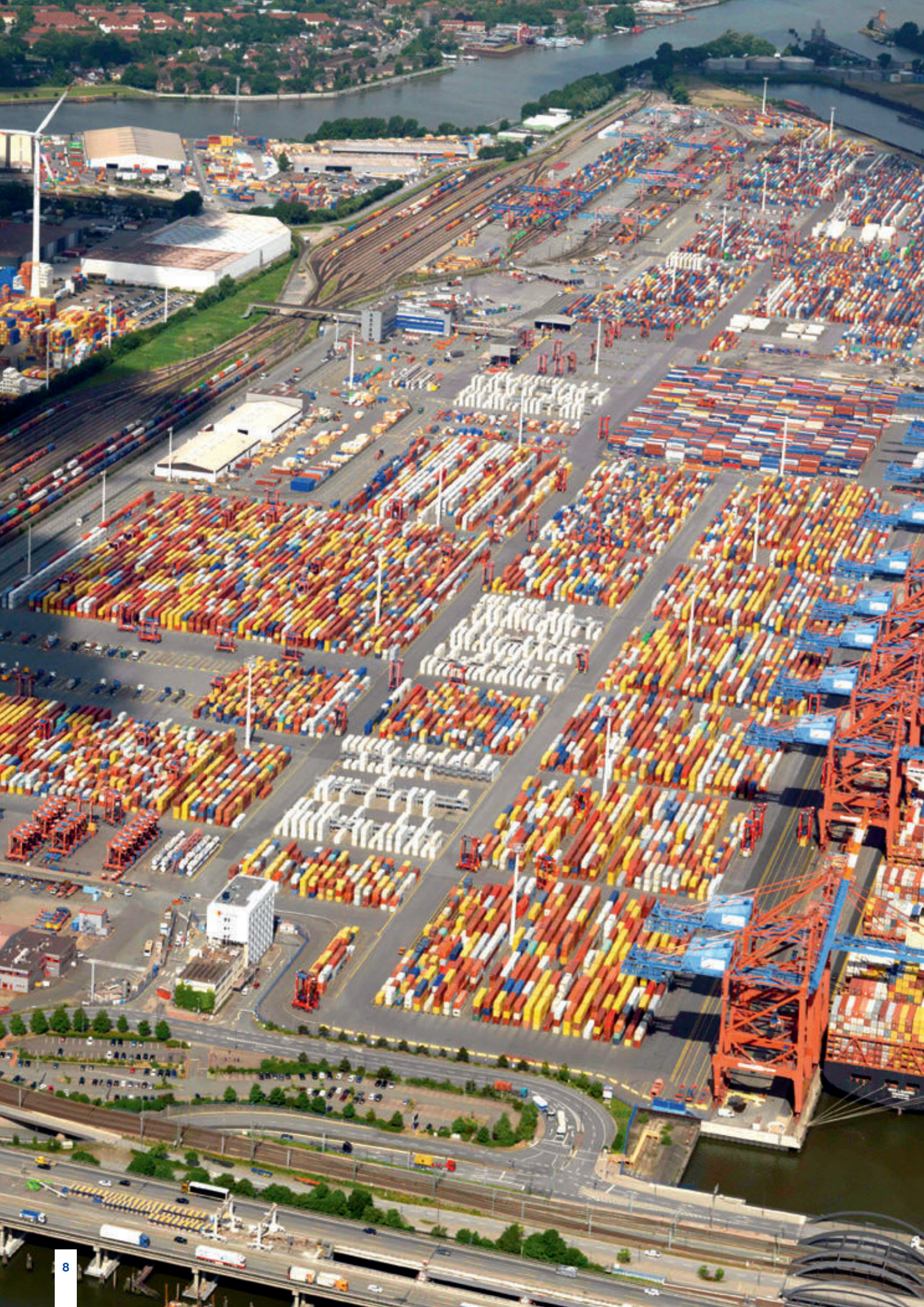
MSC Gate Bremerhaven GmbH & Co. KG

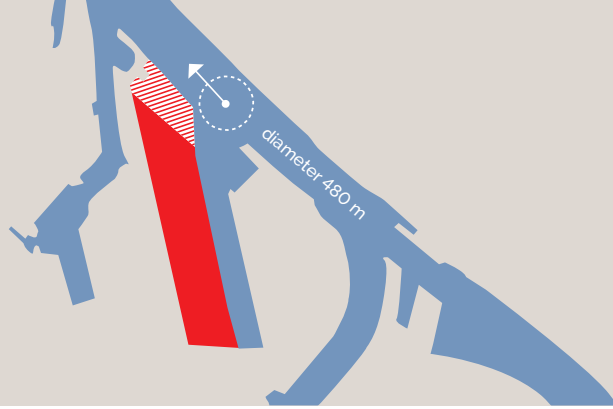
Senator-Borttscheller-Straße 1
27568 Bremerhaven, Germany
Phone: +49 471 1425-02
E-mail: sekretariat@mscgate.eu
www.mscgate.eu

Container Terminals Bremerhaven

Bremerhaven is an established cluster of highly flexible terminals with strong partnerships. The EUROGATE Container Terminals in Bremerhaven are located only 32 nautical miles from the open sea – something that facilitates the approach even of ultra-large container ships (ULCSs), avoiding a time-consuming river passage. The era of ULCSs set in earlier here than in other seaports, thanks to the good nautical conditions and hinterland connections. EUROGATE operates three container terminals at the Bremerhaven location: EUROGATE Container Terminal Bremerhaven is a common-user terminal. North Sea Terminal Bremerhaven, located at the north end of the terminal, is a dedicated terminal for the world's largest shipping line, Maersk Line. MSC Gate Bremerhaven operates from the southern point of the terminal site. It is a dedicated terminal for MSC Mediterranean Shipping Company. In addition to our core services, EUROGATE provides also handling and storage of on- and offshore wind turbines.



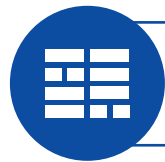




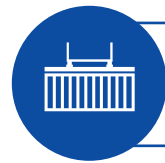
 **TERMINAL**  **TURNING BASIN DIAMETER 2020: 600 m**
 **WESTWARD EXTENSION**



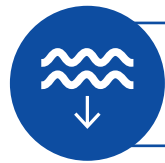
Length of quay:
2,080 m



Terminal area:
1.4 mio m²



Handling capacity:
4.1 mio TEUs



Water depth:
15.1 m



53° 32' N
09° 54' E



Container gantries:
21

HAMBURG

EUROGATE Container Terminal Hamburg

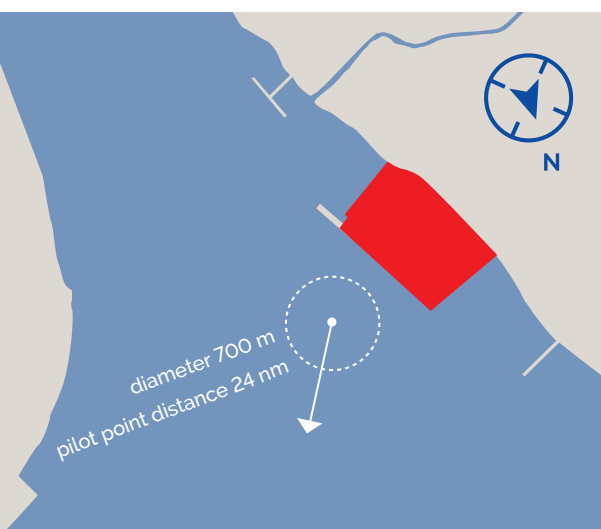
Hamburg is the most established gateway within the EUROGATE network, with strong local cargo. The EUROGATE Container Terminal Hamburg is situated in the western part of the Port of Hamburg, and the first container terminal when entering the Port of Hamburg upstream the navigation channel of the River Elbe. As one of northern Europe's main transport hubs, Hamburg offers excellent road, rail and feeder connections, also thanks to the EUROKOMBI railway station directly at the terminal site. The terminal is equipped with state-of-the-art container gantries and straddle carriers, permitting smooth and rapid handling.

**EUROGATE Container Terminal
Hamburg GmbH**
Kurt-Eckelmann-Straße 1
21129 Hamburg, Germany
Phone: +49 40 7405-0
E-mail: ct-hamburg@eurogate.eu
www.eurogate.eu





WILHELMSHAVEN



■ TERMINAL ○ TURNING BASIN



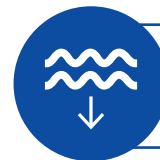
Length of quay:
1,725 m



Terminal area:
1.3 mio m²



Handling capacity:
2.7 mio TEUs



Water depth:
18 m



53° 35' N
08° 09' E



Container gantries:
8 (16)



EUROGATE Container Terminal Wilhelmshaven

EUROGATE Container Terminal Wilhelmshaven is Germany's only deep-water container terminal. The world's biggest ocean carriers have unrestricted access to the port at all times independently of tidal conditions. With a water depth of 18 m and a modern terminal design EUROGATE Container Terminal Wilhelmshaven offers ideal conditions on the North Sea for loading and unloading container vessels of any size. As a common-user terminal, all shipping lines worldwide are able to use the terminal. Its strategic location and optimum links to the hinterland also make it an ideal hub for the Rhine/Ruhr region. The terminal has a direct link to the A29 motorway. An intermodal rail terminal directly adjacent to the terminal site additionally provides connections to the European rail network.



OVERVIEW OF OUR INTERNATIONAL NETWORK

EUROGATE is Europe's shipping line independent, private container terminal operator. Our container terminals are powerful transshipment hubs for the Mediterranean, and gateways to Europe's and Africa's industrial areas.

PAGES

14 LA SPEZIA

16 RAVENNA

18 SALERNO

20 TANGIER

22 LIMASSOL

24 UST-LUGA

26 DAMIETTA



TANGIER

LA SPEZIA



UST-LUGA

RAVENNA

SALERNO

LIMASSOL

DAMIETTA



■ **TERMINAL**
 ● **TURNING BASIN**
 ● **PILOT POINT**

	Length of quay: 986 m (full container) 1,390 m (general cargo & containers)		Terminal area: 291,000 m² + 52,000 m ² Off-Dock (full container) 162,000 m² (general cargo & containers)
	Handling capacity: 1.4 mio TEUs		Water depth: 15 m
	44° 06' N 09° 50' E		Container gantries: 11 (+4 mobile cranes)

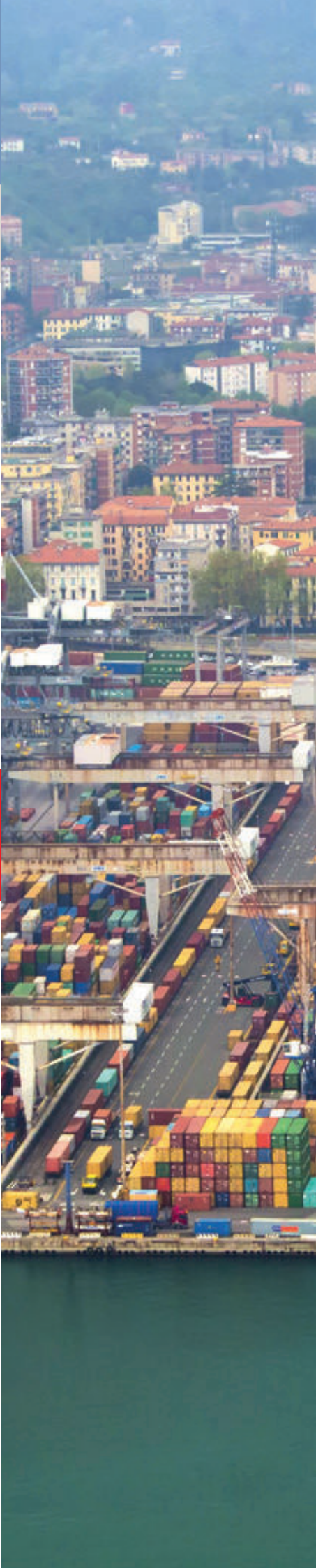
LA SPEZIA

LSCT – La Spezia Container Terminal

LSCT – La Spezia Container Terminal is well positioned and the ideal gateway for the north Italy and central Europe regions. Located at Italy's main transport intersection, LSCT offers a single point of call for multiple markets. Its excellent rail connections and direct access to the main Italian road network guarantee efficient freight transport in all directions. LSCT is Italy's leading container terminal offering continuous innovation, state-of-the-art technology, efficiency and overall service quality in the supply chain.

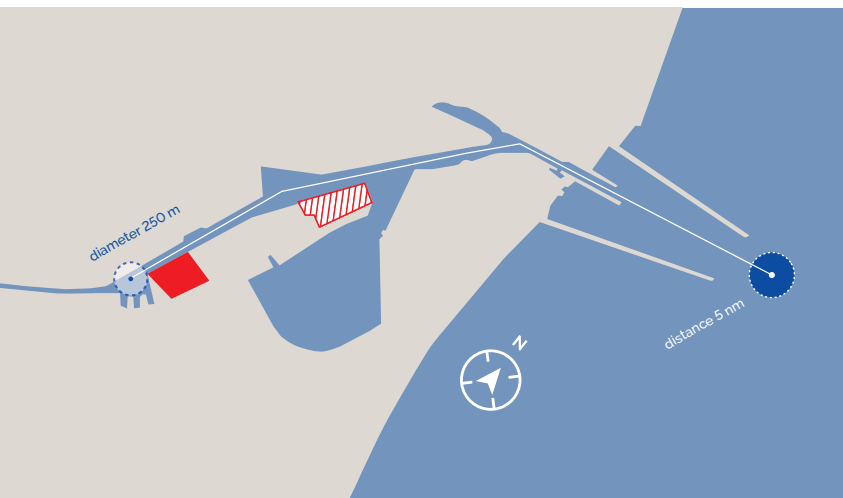


LSCT – La Spezia Container Terminal S.p.A.
 Viale S. Bartolomeo, 20
 19126 La Spezia, Italy
 Phone: +39 0187 5551
 E-mail: info@lsct.contshipitalia.com
www.contshipitalia.com





RAVENNA



-  **TERMINAL**
-  **TURNING BASIN**
-  **PILOT POINT**
-  **EXTENSION AREA**

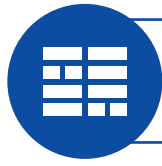
TCR – Terminal Container Ravenna

The favourable location on the northern Adriatic makes TCR – Terminal Container Ravenna the fastest link to the eastern Mediterranean, Black Sea and Suez Canal. Located in an industrial complex, the terminal is directly linked by rail to the wealthy area of north Italy. TCR provides the full range of value-added logistics services within the terminal area, and is specialised in the handling of perishable goods and refrigerated cargo. Team experience and expertise as well as the high level of flexibility make TCR a highly dynamic terminal.

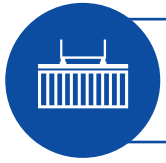




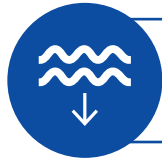
Length of quay:
670 m



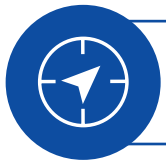
Terminal area:
250,000 m²



Handling capacity:
380,000 TEUs



Water depth:
11.5 m



44° 27' N
12° 15' E

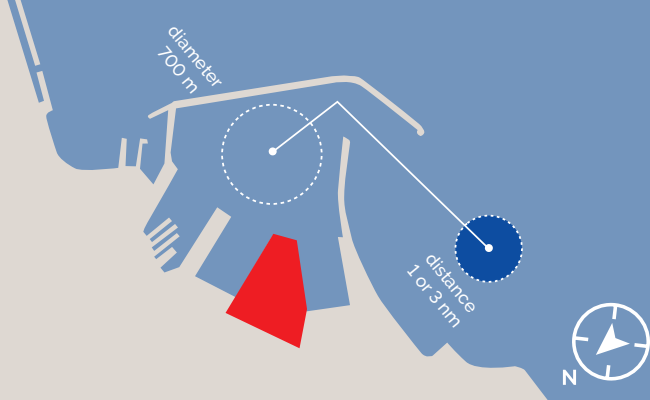


Container gantries:
4 (+1 mobile crane)



Terminal Container Ravenna S.p.A.
Via Classicana, 105
48122 Ravenna, Italy
Phone: +39 0544 434411
E-mail: infotcr@contshipitalia.com
www.contshipitalia.com

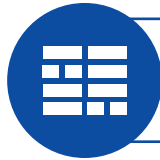




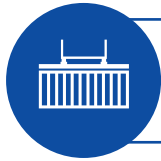
■ **TERMINAL**
 ● **TURNING BASIN**
 ● **PILOT POINT**



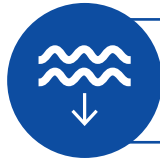
Length of quay:
829 m
 (+1080 m available)



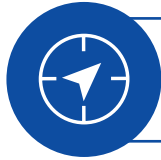
Terminal area:
100,000 m²



Handling capacity:
600,000 TEUs



Water depth:
13 m



40° 40' N
14° 44' E



Container gantries:
6 (mobile cranes)

SALERNO

SCT – Salerno Container Terminal

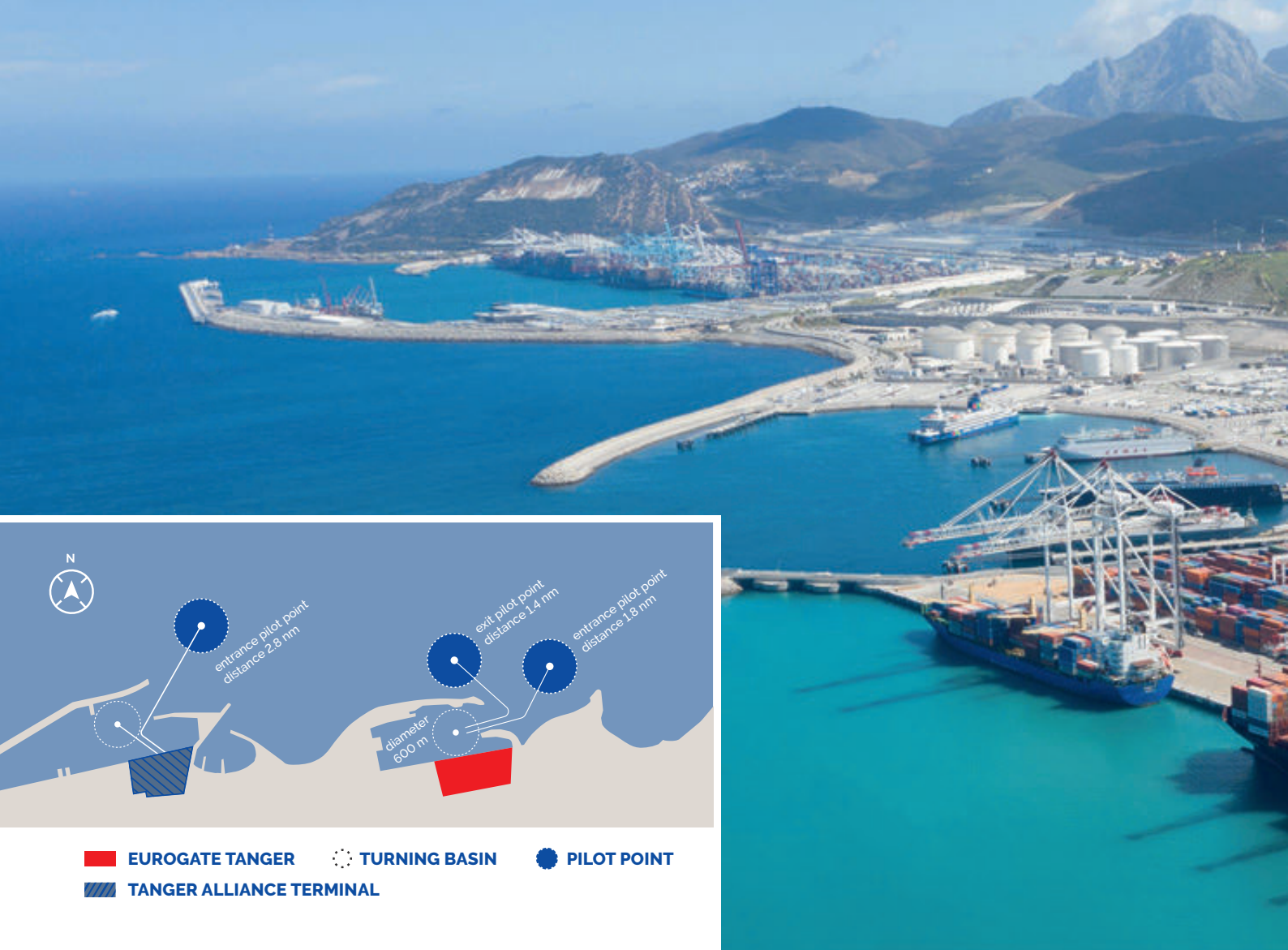
SCT – Salerno Container Terminal is the ideal gateway for serving southern Italy's markets, as it's directly connected by rail to major industrial centres such as Rome, Bari and Cosenza. Mild weather all year round, modern quay management and advanced technology make SCT an extremely efficient and high-performing facility. A high level of flexibility is guaranteed by six mobile cranes and state-of-the-art IT.



Salerno Container Terminal
 Via Camillo Sorgente, 72/A
 84125 Salerno, Italy
 Phone: +39 089 230552
 E-mail: infosct@contshipitalia.com
www.contshipitalia.com







TANGIER

Container Terminals Tangier

Situated geostrategically favorably at the Strait of Gibraltar in Morocco are the container terminals EUROGATE Tanger and Tanger Alliance Terminal. Both terminals are located in the free trade zone east of the city of Tangier. The Port of Tangier is the ideal transshipment hub for the Western Mediterranean as well as Africa and South America.

The container terminal EUROGATE Tanger S.A. is the southernmost facility in the EUROGATE network. Since 2008, the world's largest container ships can be handled here.

The Tanger Alliance Terminal represents the second terminal location in Tangier, Morocco since 2021.

EUROGATE Tanger S.A.

Zone Franche de Ksar Al Majaz,
 Oud R'mel, Commune Anjra, Route Fnideq
 90000 Tangier, Morocco
 Phone: +212 53 9378219
 E-mail: communication@eurogate-tanger.com
www.eurogate-tanger.com

Tanger Alliance Terminal

Zone Franche Ksar Al Majaz – Terminal à
 Conteneurs 3 – Port Tanger Med 2,
 Tangier, Morocco
 Phone: +212 66 2670011
 E-mail: commercial@tangeralliance.com
www.marsamaroc.co.ma/en/ports-and-terminals/tanger-alliance



EUROGATE
Tanger



Length of quay:
812 m



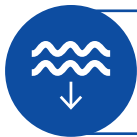
Terminal area:
400,000 m²



35° 53' N
05° 29' W



Handling capacity:
1.5 mio TEUs



Water depth:
18 m



Container gantries:
8 (+1 mobile crane)

Tanger Alliance
Terminal



Length of quay:
800 m



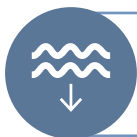
Terminal area:
360,000 m²



35° 53' N
05° 29' W



Handling capacity:
1.5 mio TEUs



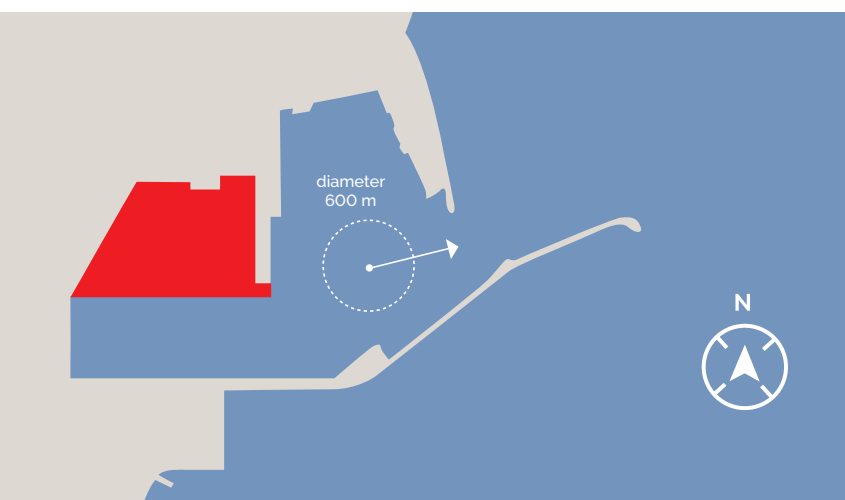
Water depth:
18 m



Container gantries:
6 STS cranes



LIMASSOL



 **TERMINAL**  **TURNING BASIN**

EUROGATE Container Terminal Limassol

The Port of Limassol is the main port on the Island of Cyprus. It handles 90 per cent of the export and import volumes of the country. EUROGATE has taken over operations of the container port on 29 January 2017.



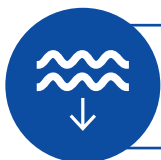
Length of quay:
800 m



Terminal area:
340,000 m²



Handling capacity:
500,000 TEUs



Water depth:
16 m



34° 39' N
33° 01' E



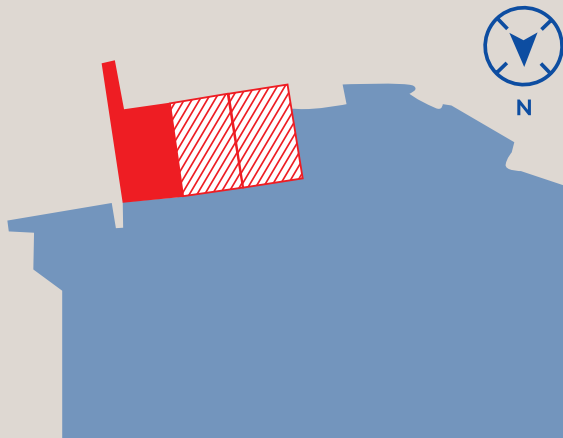
Container gantries:
5

EUROGATE Container Terminal Limassol Limited

New Port of Limassol
1 Episkopou Meletiou str.
3045 Limassol, Cyprus
Phone: +357 25 858800
E-mail: info@eurogate-limassol.com
www.eurogate-limassol.com



UST-LUGA



■ TERMINAL ▨▨▨▨ EXTENSION AREA

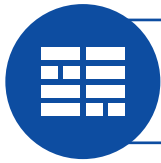
ULCT – Ust-Luga Container Terminal

ULCT – Ust-Luga Container Terminal is the first Russian container terminal built at the deep-water port with unique advantages. It is located about 150 km to the west of St. Petersburg, and started operation in 2011. In future it will be the largest and most technologically advanced facility in Russia and Eastern Europe.

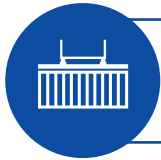




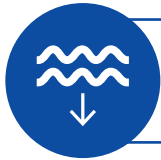
Length of quay:
440 m operational



Terminal area:
504,000 m²



Handling capacity:
440,000 TEUs



Water depth:
13.5 m



59° 40' N
28° 24' E



Container gantries:
4

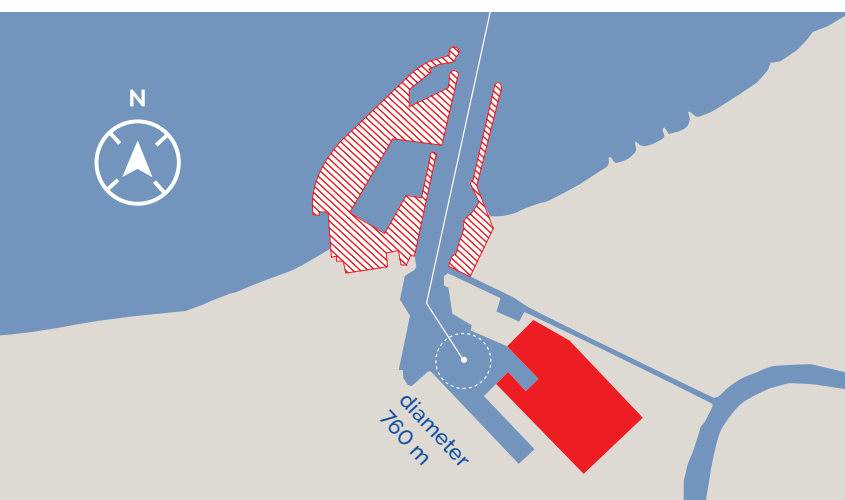
Ust-Luga Container Terminal

28 Floor, Leader Tower BC,
3 Ploshchad Konstitutsii bld. 2,
St. Petersburg, 196247, Russian Federation
Phone: +7 812 4540707
E-mail: info@ulct.ru
www.ulct.ru





DAMIETTA



 **TERMINAL**  **EXTENSION AREA**  **TURNING BASIN**

Damietta Alliance Container Terminal

A new terminal will be built in the port of Damietta/Egypt. The new Terminal 2 at the port of Damietta is expected to start operations by 2025. It will have a final total operational capacity of 3.3 mio TEU and serve as Hapag-Lloyd's dedicated strategic trans-shipment hub in the East Mediterranean.



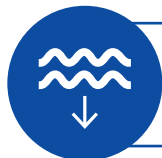
Length of quays:
658 m (North) +
1000 m (South)



Terminal area:
873,327 m²



Handling capacity:
3.3 mio TEUs



Water depth:
18 m

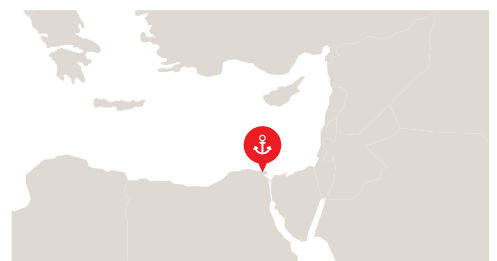


31° 28' N
31° 46' E



Container gantries:
7 (Southern quay) +
5 (Northern quay)

Damietta Alliance
Container Terminals S.A.E.
 Second Container Terminal (Tahya Misr 1)
 P.O. Box 13, Damietta Port Authority
 New Damietta * Damietta * Egypt



OUR INTERMODAL NETWORK – RELIABLE CONNECTIONS

EUROGATE offers seaport hinterland transport services across Europe – from Germany's North Sea to the Mediterranean. Containers are transported from EUROGATE's seaports to Europe's most important industrial centres via a combined road and rail network.

As a provider of sustainable, reliable intermodal transport services, EUROGATE Intermodal (EGIM) connects customers with destinations across Europe. EGIM combines decades of industry experience with fresh perspectives to maintain its position as one of Germany's leading combined transport providers. Through efficient rail connections between the German ports and eleven inland terminals in Germany and Hungary, EGIM customers benefit from regular services with the shortest possible transit times and lowest emissions. To ensure a seamless supply chain, first and last-mile trucking services are also available.

Through Hannibal, a Contship Italia intermodal company, pure rail and road as well as intermodal transport services are available in Italy and across the Alps to/from Central Europe.

EUROGATE Intermodal GmbH
Kurt-Eckelmann-Straße 1
21129 Hamburg, Germany
Phone: +49 40 7405-0
E-mail: egim.sales@eurogate.eu
www.egim.eu

Hannibal S.P.A.
Via I Maggio, 1
20066 Melzo MI, Italy
Phone: +39 02 955241
E-mail: info@contshipitalia-hannibal.it
www.contshipitalia.com



railMybox, launched in May 2022, is EGIM's fully digitised, all-in-one intermodal platform. Offering complete control over the transport process, railMybox enables customers to book connections to southern Germany in a few clicks. Users of the cloud-based platform benefit from instant capacity information, transparent pricing as well as real-time shipment updates. Using 100% hydro-powered trains and eco-mode trucking, railMybox offers CO2-neutral combined transport possibilities. Operating independently of third parties, railMybox brings complete intermodal transparency to customers' fingertips.

railMybox

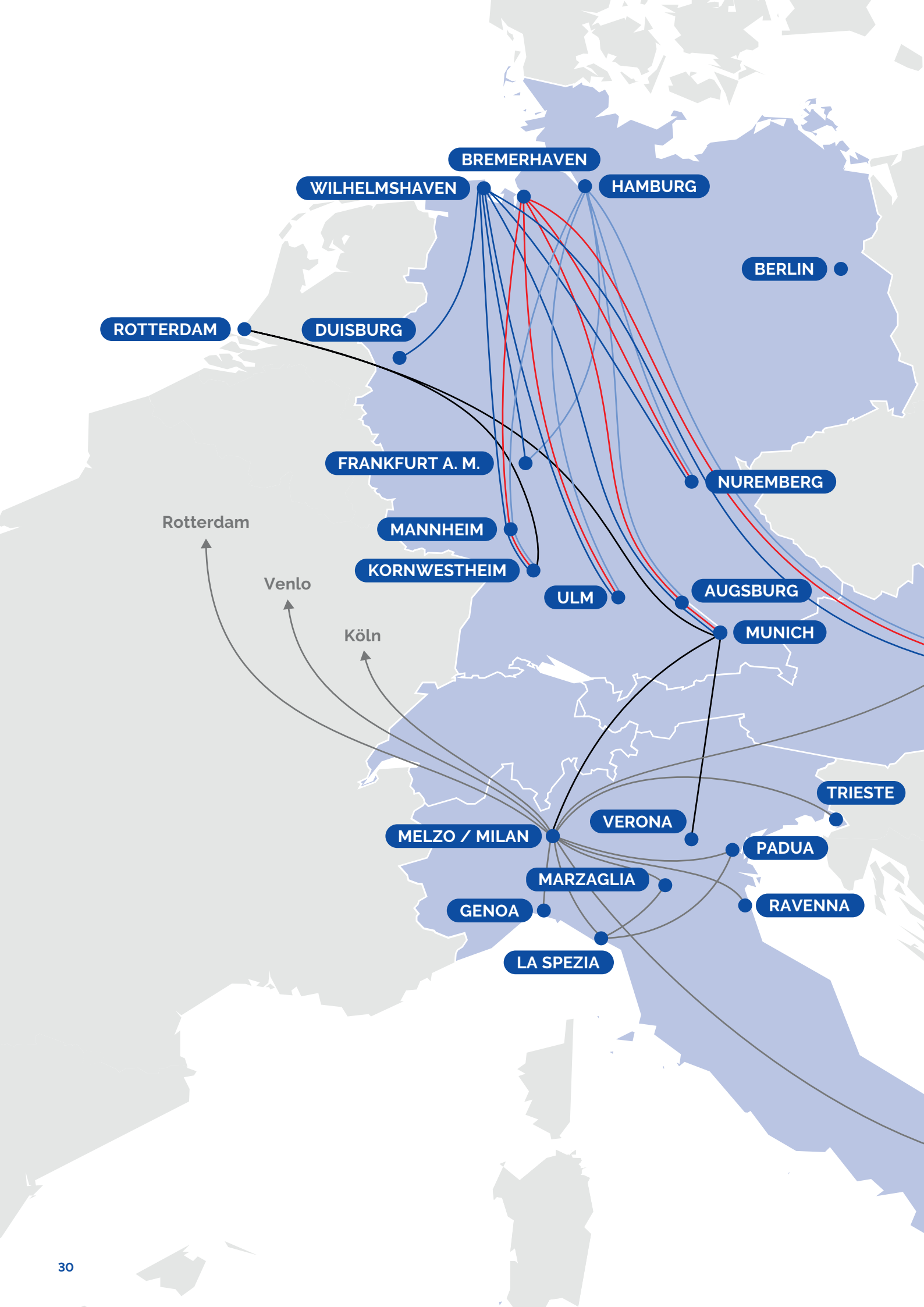
E-mail: support@railMybox.de
www.railMybox.com

driveMybox, founded in 2019, is a digital all-in-one platform for container shipments in road transport, based in Hamburg. driveMybox connects all players of the container's preliminary and subsequent leg via one single and secure cloud-based platform. It's setting new standards by offering Live tracking, online booking, automatically processing of payments, direct communication and digital bills of lading.





driveMybox

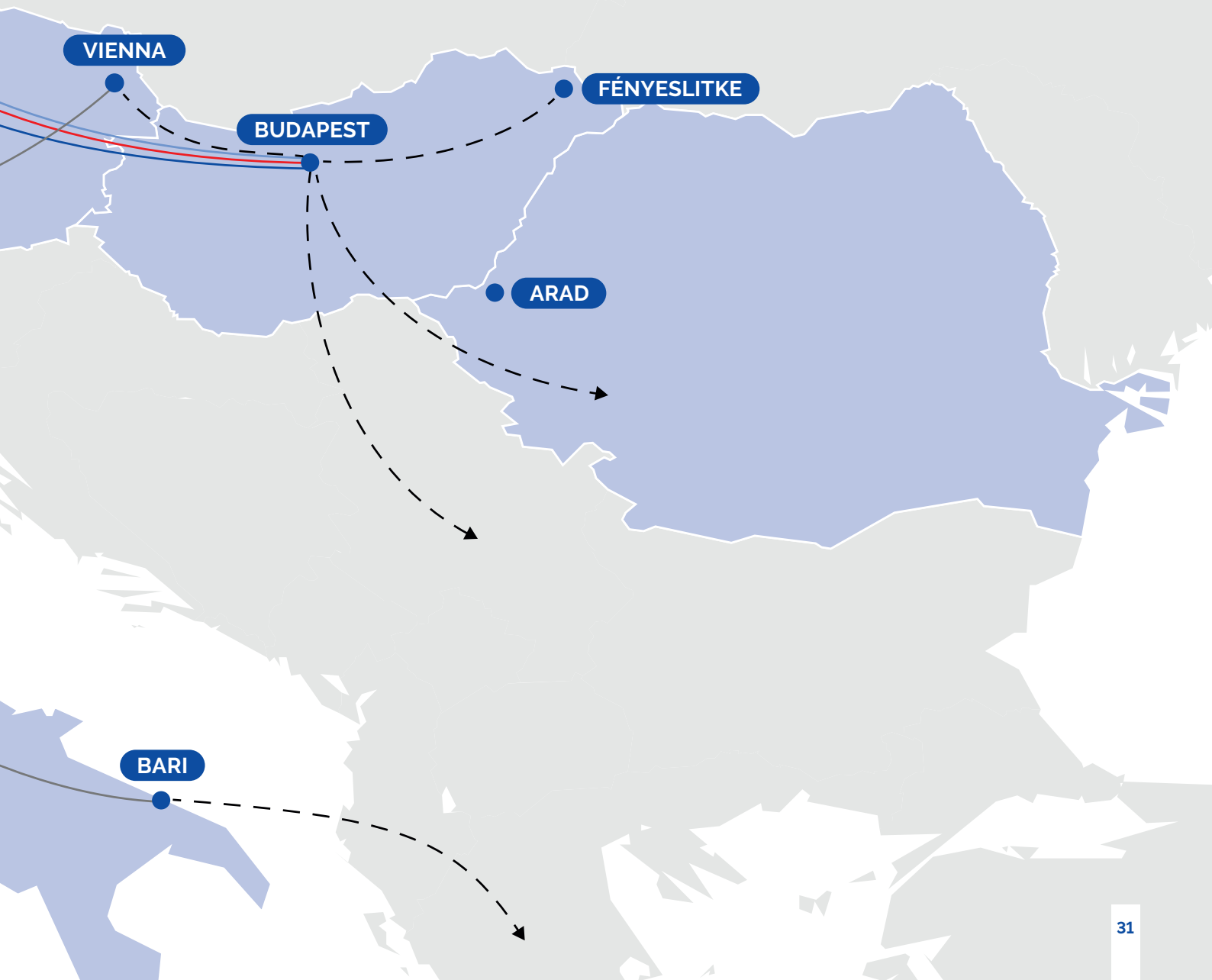
Gasstraße 18, Haus 6b,
22761 Hamburg
Phone: +49 40 2999 608 54
E-mail: support@drivemybox.eu
www.driveMybox.eu





INTERMODAL NETWORK

-  Intermodal services e.g. EGIM Regular Service, box Xpress.de
-  boxXpress.hu
-  Contship Italia Intermodal
-  Further connections abroad



OUR SERVICES AROUND THE BOX – STRONG TEAM FOR YOUR LOAD

At the EUROGATE container terminals, experienced specialists offer an extensive range of cargomodal services. Whether packing, lashing or unloading – with the EUROGATE companies, your goods are in good hands at all times. At our locations in Hamburg and Bremerhaven, in addition to efficient facilities and individual services, you will above all find qualified and experienced staff who bring their expertise and motivation to the job for you.

The teams from SWOP Seaworthy Packing and Container Freight Station are your partners of choice when it comes to linking overland and seabound transport. Whatever our customers wish to pack: we have a solution that fits. Our handling know-how ranges from paper, refractory bricks, cellulose, acetate and steel, through consumer goods and products for the metalworking, mechanical engineering and electrical industries, to beverages and luxury cars.

All members of the EUROGATE Group work in an optimally networked environment on the basis of uniform quality standards, and ensure customers excellent service for faster processes and absolute transparency in terms of process control.

SWOP Seaworthy Packing
Kurt-Eckelmann-Straße 1
21129 Hamburg, Germany
Phone: +49 40 7405-2218
E-mail: swop@swop.eu
www.swop.eu

**EUROGATE Container Terminal
Bremerhaven Container Freight Station**
Senator-Borttscheller-Str. 6
27568 Bremerhaven
Phone: +49 471 1425-4443
E-mail: cfsinfo@eurogate.eu
www.eurogate.eu



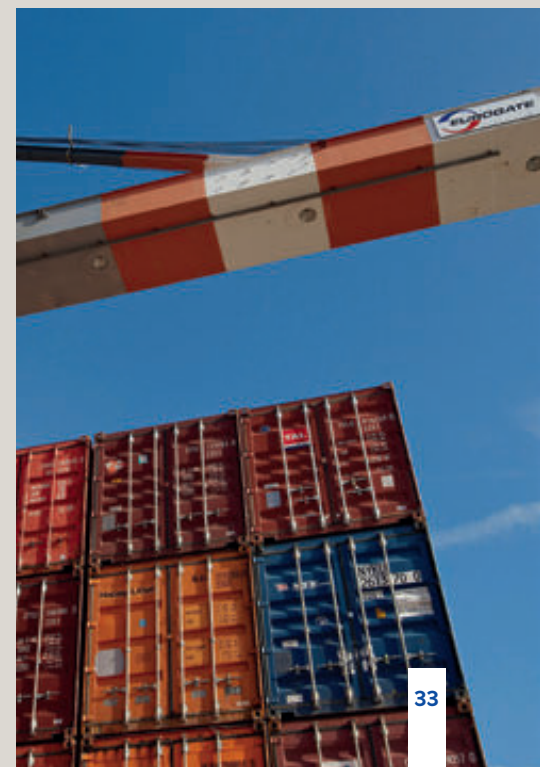


REMAIN CONTAINER-DEPOT AND REPAIR – OUR CONTAINER SERVICES

Apart from seaport container handling, EUROGATE offers its customers a range of supplementary services. From leasing or storage of empty and refrigerated containers, to cleaning and repair of used containers – REMAIN is the specialist of choice for your steel boxes in Bremen, Bremerhaven, Hamburg and Wilhelmshaven. Founded in 1976, REMAIN provides container handling, storage, repair, servicing and box cleaning services – 24-hour refrigeration service inclusive. Alongside our core business, we also buy and sell new and used containers. All services offered have one thing in common: unbeatable high quality.

The depot information and control system "remainMybox" is adapted to all current and future requirements of a modern container depot. The modular system offers increased efficiency and transparency, for example through digital container files, digital recording of check and inspection processes, a digital workshop card, direct integration of all large devices used (reach stackers and empty handlers) via the iPad app and automatic creation and sending estimates and invoices.

REMAIN GmbH Container-Depot and Repair
Dradenauer Deichweg 1
21129 Hamburg
Phone: +49 40 7405-2600
E-mail: kundendienst@remain.de
www.remain.de









EUROGATE GmbH & Co. KGaA, KG
Präsident-Kennedy-Platz 1A
28203 Bremen, Germany
Phone: +49 421 1425-02
E-mail: info@eurogate.eu
www.eurogate.eu



www.eurogate.eu/linkedin



www.eurogate.eu/twitter



www.eurogate.eu/xing



www.eurogate.eu/yt